

# L TIMING PULLEYS

0.375" Trapezoidal Pitch

For 1" Wide Belts

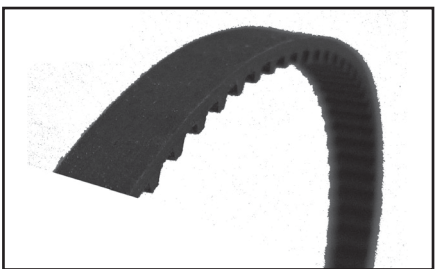
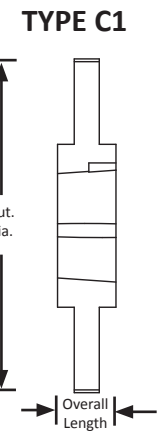
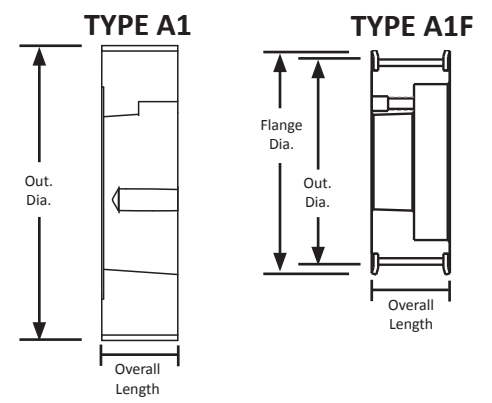
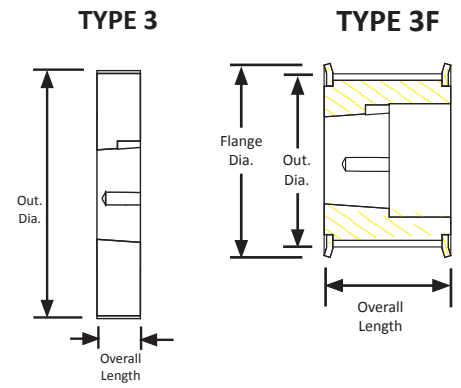
Steel/Iron

Black Oxide Plating

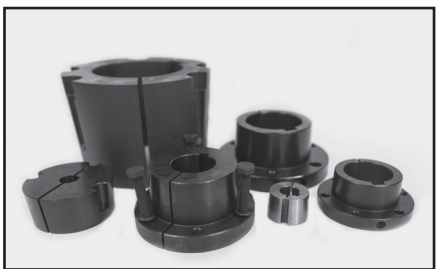
Taper-Lock® style



Part Number	No. of Teeth	Type	Pitch Dia. (in)	Out. Dia. (in)	Flange Dia. (in)	Bushing	Face Width (in)	Overall Length (in)
TL18L100-1008	18	3F	2.149	2.119	2.375	1008	1.250	1.250
TL18L100-1108	18	3F	2.149	2.119	2.375	1108	1.250	1.250
TL20L100-1008	20	3F	2.387	2.357	2.625	1008	1.250	1.250
TL20L100-1108	20	3F	2.387	2.357	2.625	1108	1.250	1.250
TL22L100-1008	22	3F	2.626	2.596	2.875	1008	1.250	1.250
TL22L100-1108	22	3F	2.626	2.596	2.875	1108	1.250	1.250
TL24L100	24	3F	2.865	2.835	3.094	1210	1.250	1.250
TL26L100	26	3F	3.104	3.074	3.330	1210	1.250	1.250
TL28L100	28	3F	3.342	3.312	3.566	1610	1.250	1.250
TL30L100	30	3F	3.581	3.551	3.800	1610	1.250	1.250
TL32L100	32	3F	3.820	3.790	4.044	1610	1.250	1.250
TL36L100	36	A1F	4.297	4.267	4.520	1610	1.250	1.250
TL40L100	40	3F	4.775	4.745	4.520	2012	1.250	1.250
TL48L100	48	3F	5.730	5.700	5.000	2012	1.250	1.250
TL60L100	60	3	7.162	7.132	-	2012	1.250	1.250
TL72L100	72	A1	8.594	8.564	-	2012	1.250	1.250
TL84L100	84	C1	10.027	9.997	-	2517	1.250	1.750



For matching L pitch belts, see page 194.



For matching Taper-Lock® bushings, see page 373.